



1 & 2 BHK GARDEN FACING HOME
PLOT NO. 61, PANTNAGAR, GHATKOPAR





SHREEJI LAXMI

WHEN IT IS ABOUT CHASING MOMENTS
WHEN IT IS ABOUT SCULPTING MEMORIES
WHEN IT IS ABOUT STALKING SMILES

WHEN IT IS ABOUT TAKING RAPID STRIDES,
AWAY FROM THE MADDING CROWD



SHREEJI LAXMI

Nestled in a beautiful landscaped setting, in the heart of Pantnagar, Shreeji Group brings you another Legacy milestone – Shreeji Laxmi. True to its name, Shreeji Laxmi promises a royal experience loaded with all the comforts and modern embellishments.

Come, explore a royal affair!

SHREEJI LAXMI

1 & 2 BHK GARDEN FACING HOME

At Shreeji Laxmi we strive to create a place of perfection and practicality. It has been our endeavour to create an equilibrium of amenities and aesthetic value hence. Carefully planned and meticulously executed, The Imperial is our vision come true. Delivering full facilities with impeccable quality standards.

excellence is in the details



An address that
showcase your status

EMINENT



Fantastic Lifestyle
amenities for you to indulge in

MODERN



Each corner is
adorned with sophistication

MAJESTIC



Vastu Compliant Home
that is sure to impress you

VASTU HOME



SHREEJI LAXMI

SHREEJI LAXMI

1 & 2 BHK GARDEN FACING HOME



A lifestyle masterpiece that **redefines luxury** living. Immerse yourself in a world of grandeur and sophistication that transcends expectations. Our meticulously designed residences **offer spacious layouts** and **awe-inspiring views**, inviting you to embrace the pinnacle of contemporary living. Experience the epitome of indulgence through our unrivalled amenities. Nestled in the **vibrant heart of Ghatkopar**, Shreeji Laxmi seamlessly weaves **convenience** and **elegance**, presenting a truly exceptional lifestyle.





SHREEJI
LAXMI





SHREEJI LAXMI



Open Gym



Children Play Area



Yoga Zone



Barbeque Area



Informal Sitting Area



Jogging Track

Rooftop Amenities





Premium quality
vitrified tiles
flooring



Anodised
aluminium
windows



Building designed
to resist the
seismic forces



Designer bathrooms
with premium sanitary
fixtures & branded
C.P. fittings



Concealed
plumbing & solid
core internal
flush doors



Ample Car
parking space



Specification



Designer kitchen
with granite top
and S.S. sink



Manned grand
entrance with high-end
security / intercom facility



Well paved driveway
with lighting
in the compound



Exclusively well
decorated entrance
& lift lobby

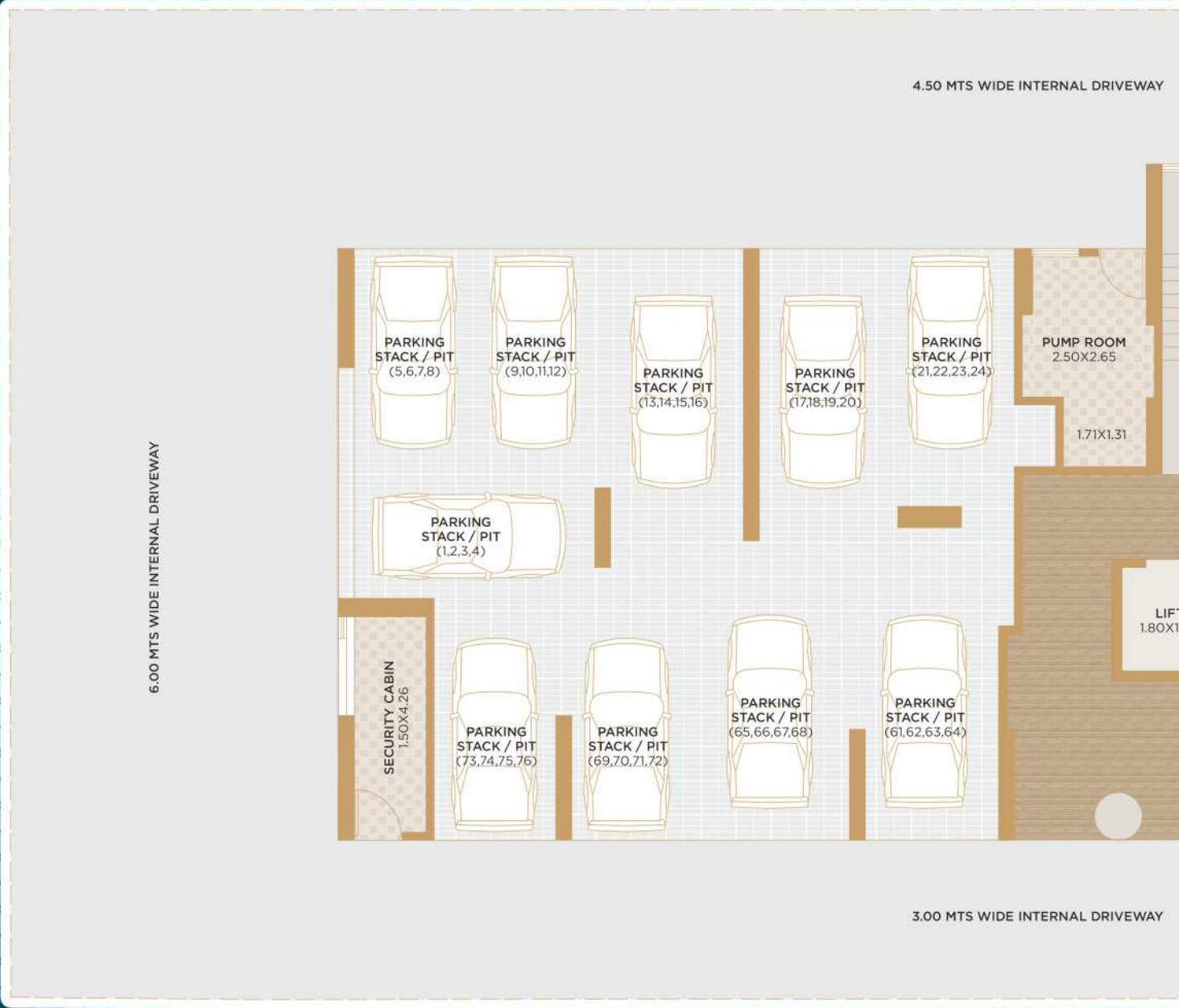


Branded automatic
elevators



Fire fighting
system

GROUND FLOOR PLAN





TYPICAL FLOOR PLAN



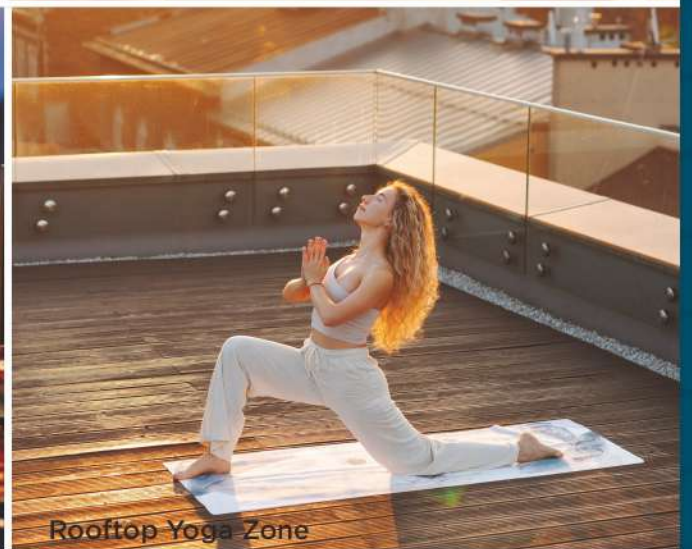




AC Gymnasium



Rooftop Barbeque Area



Rooftop Yoga Zone



Rooftop Children Play Area



Rooftop Gymnasium



1 BHK HOME

RERA CA : 431 SQ.FT.



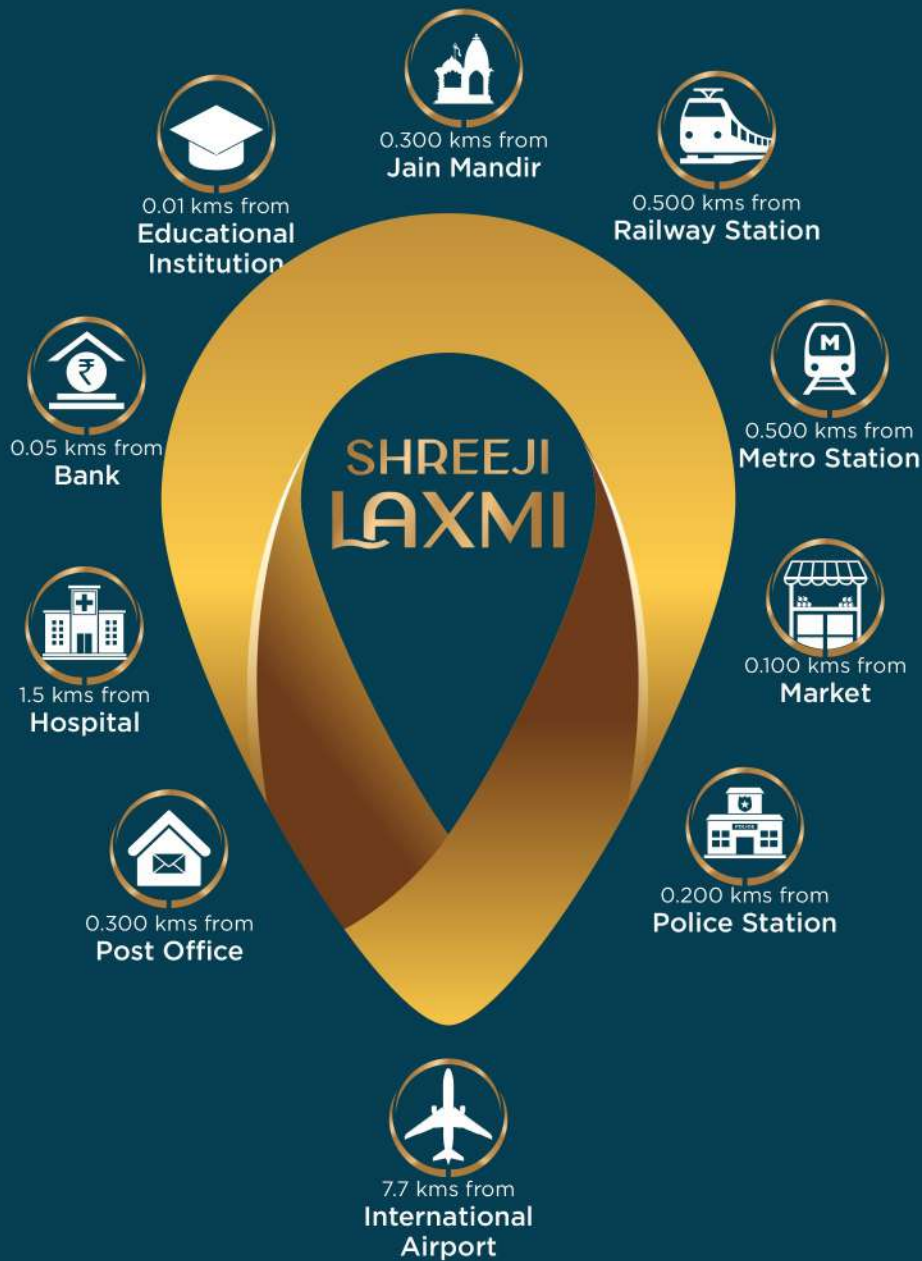
1 BHK HOME

RERA CA : 462 SQ.FT.



2 BHK HOME

RERA CA : 589 SQ.FT.



City Best Connected Address

Reside at the nexus of connectivity where all desires are blissfully reachable via rail, metro, road or even the airport. Every part of Mumbai city is easily accessible to its remotest corner from **Shreeji Laxmi**.

Its proximity to the Eastern Express Highway, Ghatkopar-Andheri Link Road, M. G. Road and Chhatrapati Shivaji Maharaj International Airport give a smooth ride to life. Vidyavihar station, Ghatkopar East and West stations are just a stone's throw away. **Shreeji Laxmi** is also strategically located close to malls, multiplexes, Jain Mandir, Jain Upashray, several hospitals, schools and colleges. Residents of all age groups have exceptional reachability to all essentials including education, health care, places of worship and entertainment.





EASTERN EXPRESS HIGHWAY





EASTERN EXPRESS HIGHWAY



LOCATION QR Code

LOCATION PLAN



Office Address :

B - 103, The Great Eastern Summit, Plot No. 66, Sector - 15, CBD Belapur, Navi Mumbai - 400 614

Site Address :

Shreeji Laxmi | Plot No. 61, Pantnagar, Ghatkopar - East, Mumbai - 400 075

Booking Contact : 70214 30600 / 9004397005

Email Id : shreejigroup02@gmail.com | **Website :** www.shreejilifespacesgroup.com

Liasioning Architect : Archo Consultant

Planning Architect : J. M. C Architect

RCC Consultant : Associated Structural Engineers LLP



MahaRera No.: P520000XXXX <https://maharera.mahaonline.gov.in>



LOCATION QR Code



MahaRERA QR Code

DISCLAIMER: All materials contained in this brochure should not be considered an OER and are solely of an informational nature. The references, images, advertising or declarations made herein are informational only, and not to be interpreted in any other manner. The developer (Shreeji Lifespace LLP and/or its allies and/or its subsidiaries) reserves the right to make any modifications to the materials, specifications, plans, designs and delivery of the residences advertised here without any prior notice. All of the specifications contained herein, including technical, promotional, related to images or of any other nature are the property of Shreeji Lifespace LLP and/or its allies and/or its subsidiaries and such specifications may not be used by any person, including an individual entity, without the prior written consent of Shreeji Lifespace LLP and/or its allies and/or its subsidiaries.